



Estate Agents



Auctioneers

Parkwood Road, Southbourne, Bournemouth, BH5 2BS

£310,000 – Share of Freehold

Refurbished Two Bedroom, Two Bathroom Flat | Communal Porch and Hallway | Stairs to Landing
22' Reception Room | Modern Kitchen | 15' Master Bedroom | Family bathroom | Second Bedroom with En-suite Shower Room
50' Rear Garden | Off Street Parking | Share Of Freehold | No Chain

A superbly refurbished and most spacious two bedroom, two bathroom first floor flat with its own rear garden and off street parking. The flat is ideally situated just a few minutes' walk from the ever popular shopping parade at Southbourne Grove with its array of coffee shops, bars and restaurants, as well as the stunning beaches and clifftops at Southbourne and Boscombe Spa. Viewing highly recommended.

Enter via the communal porch and through the front door; stairs then rise to the first floor landing. To the rear is the impressive 22' reception room with bay window and the 13' stylish modern kitchen fitted with a comprehensive range of wall and base units - having a built in oven & hob and space for all other appliances. To the front aspect is the 15' master bedroom served by the main bathroom, which is fitted with a modern three piece suite of bath/shower, w/c and basin and the second double bedroom has its own stylish en-suite of shower, w/c and basin. Access to loft space.

Outside, at the front there is parking for one car. Gated side access to garden.

There is a private rear garden, approx. 50 in depth with a large lawn and a patio area, plus storage shed.

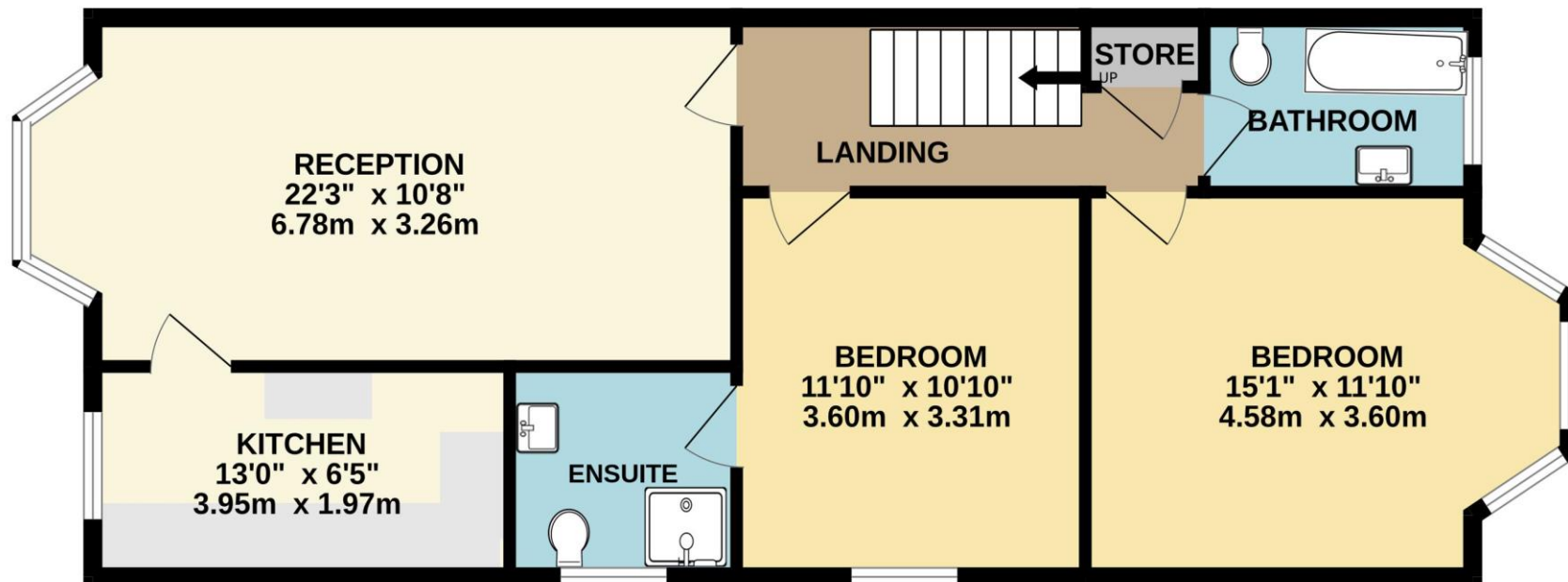
Tenure: To be sold with a Share of freehold

Maintenance: As and when required





FIRST FLOOR
768 sq.ft. (71.4 sq.m.) approx.



TOTAL FLOOR AREA : 768 sq.ft. (71.4 sq.m.) approx.

Whilst every attempt has been made to ensure the accuracy of the floorplan contained here, measurements of doors, windows, rooms and any other items are approximate and no responsibility is taken for any error, omission or mis-statement. This plan is for illustrative purposes only and should be used as such by any prospective purchaser. The services, systems and appliances shown have not been tested and no guarantee as to their operability or efficiency can be given.
Made with Metropix ©2023

Disclaimer These particulars, whilst believed to be accurate are set out as a general outline only for guidance and do not constitute any part of an offer or contract. Intending purchasers should not rely on them as statements of representation of fact, but must satisfy themselves by inspection or otherwise as to their accuracy. We have not carried out a detailed survey nor tested the services, appliances and specific fittings. Room sizes should not be relied upon for carpets and furnishings. The measurements given are approximate. No person in this firm's employment has the authority to make or give any representation or warranty in respect of the property.

Richard Godsell – Estate Agents – Auctioneers

3 Southbourne Grove • Southbourne • Bournemouth • BH6 3RE

Tel: 01202 424214 | Email: southbourne@richardgodsell.com

Offices at

Southbourne • Christchurch • London

www.richardgodsell.com

